

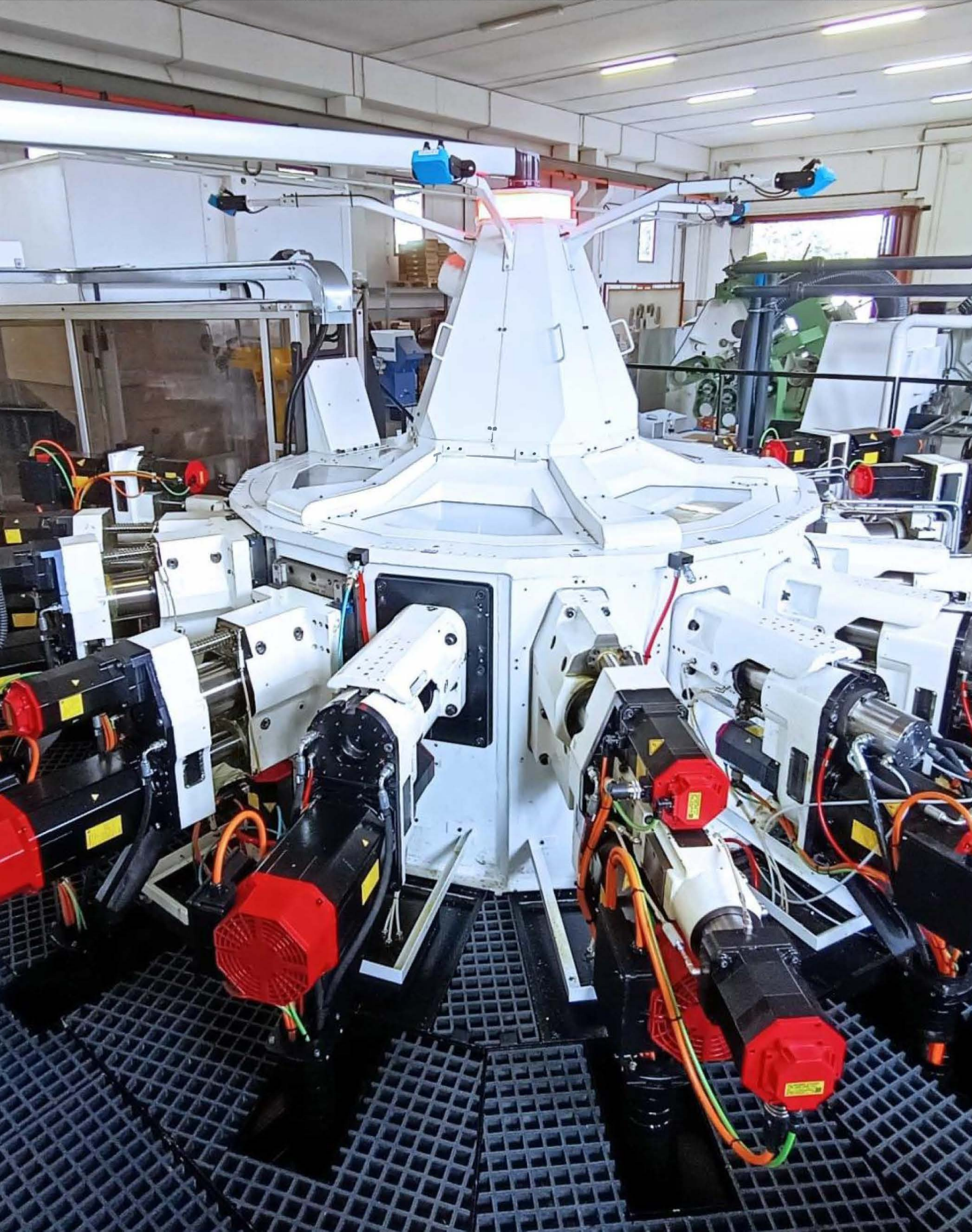


TECHNOMAT 32-16



THE REVOLUTION OF ROTARY TRANSFER MACHINES

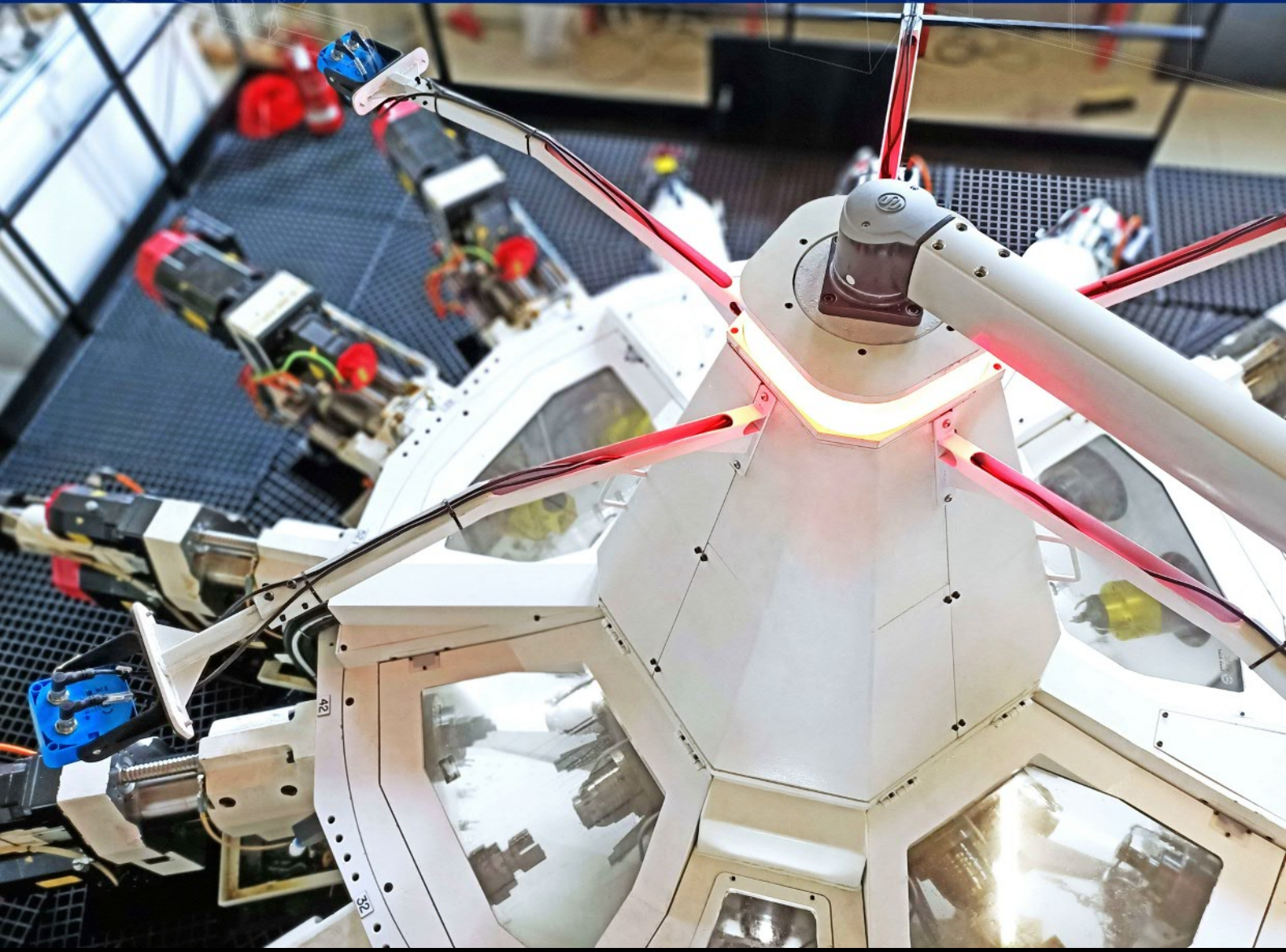
JOIN THE REVOLUTION



High Performance and Technology

The **TECHNOMAT 32-16** is a Rotary Transfer Machine that is capable of vertical and horizontal machining - complete with 16 ball screw stations including one cut-off station and one inverting station. This machine is suitable for machining parts in the automotive, hydraulic, aerospace, medical, and agricultural industries. This Rotary Transfer Machine is modular and customizable for your specific operations, making the **TECHNOMAT 32-16** the perfect solution to shortening your cycle times and maximizing your production efficiency. The **TECHNOMAT 32-16** utilizes Fanuc controls that will never go obsolete. For loading blanks and unloading finished parts, this machine is complete with a robot load and unload cell. This machine has a capacity of 50mm and features collets, rotating collets, or 2-jaw chucks to securely hold the most unique part geometries.

UP TO 16 STATIONS



Layout

The **TECHNOMAT 32-16** has a compact layout with a raised platform for easy access to all of the units and the electrical panel.

This machine can be equipped with a magazine bar feeder & cut off unit or a robot load & unload cell. The robot load and unload cell is accessible from the ground floor complete with a security door.

To access the inside of the machine, simply activate the automatic doors that are located on top of the machine base. For added security, the automatic doors utilize motion detection sensors to lock the system from closing the doors while the inside of the machine is being accessed.

TANK FILTRATION
HIGH AND LOW PRESSURE

ELECTRICAL AND
HYDRAULIC CABINETS

MACHINE

AUTOMATIC
DOORS

CHIP CONVEYOR

PENDANT

ROBOT LOAD/UNLOAD CELL

12.5m x 7.8m (41 ft x 25.6 ft)

Features

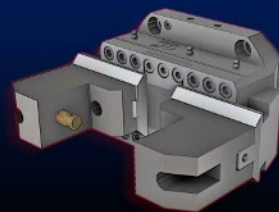
The **TECHNOMAT** is a very versatile machine with a wide possibility of customization:

- 16 stations with a 50mm capacity
- Up to 4 axis CNC ball screw units (40/90 & 55/120)
- Capable of 16 horizontal and 8 vertical stations
- Automatic tool changers
- Milling, profile turning, threading, tapping, broaching, and deburring
- Standard collets, rotating collets, or 2-jaw chucks
- Quick change Hainbuch collets for fast and easy changeovers
- Index table and hirth ring coupling for world class accuracy and repeatability
- Barfeeder and vertical cutoff unit for exceptional cutoff accuracy
- Inverting unit
- Milling heads
- Multi-spindle heads
- HSK Quick change heads
- Fanuc, Siemens, or BNR control that is guaranteed to never go obsolete
- Tool monitoring and control
- Laser motion detection for added safety

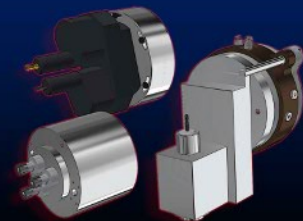
and more...



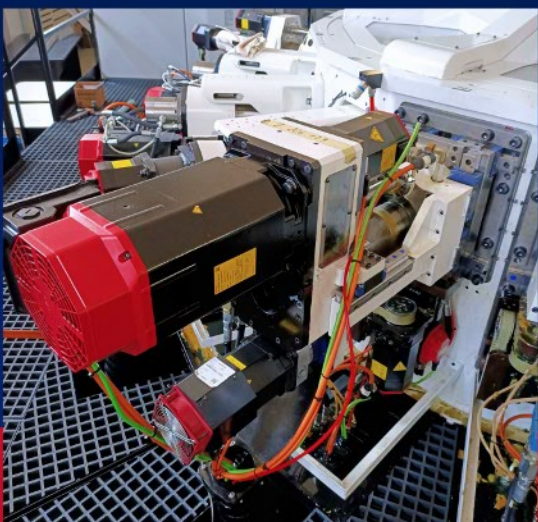
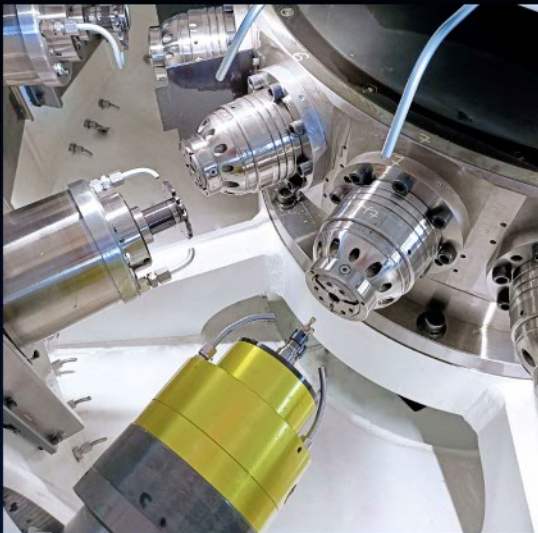
TOOL CHANGERS



TWO JAW CHUCK



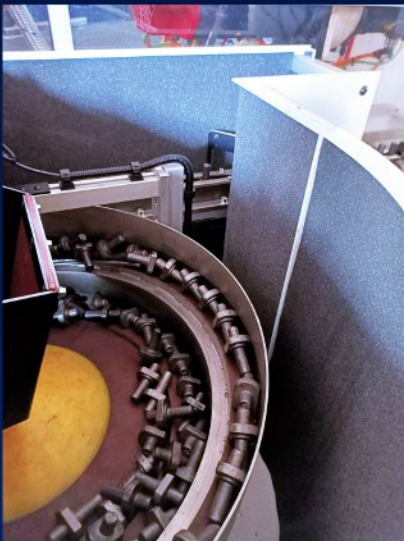
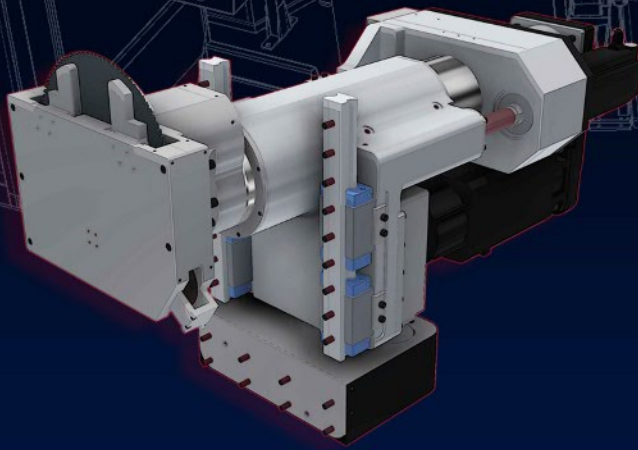
MILLING AND MULTISPINDLE HEADS



Bar Feeders or Blanks

The **TECHNOMAT 32-16** can be loaded with forged pieces by robot, lift/tipper and conveyor belts OR it can have a bar feeder and cutoff unit:

- Up to 360mm saw blades
- Up to 600 rpm (material dependent)
- Up to 15kW Motor



Parts and Materials

The **TECHNOMAT 32-16** can machine numerous types of materials including but not limited to brass, aluminum, carbon, & stainless steel.

The units contain oversized spindle bearings and longer stroke capacity than typical Rotary Transfer Machines which allows for increased accuracy & exceptional rigidity on both light and heavy duty machining applications.



Italy in the USA

Revolution Machine Works
5613 Cloverleaf Parkway
Valley View, OH 44125

For inquiries, please contact:

Kris Fugate - President
812-290-1975
kfugate@revolutionmw.net

Brennan Kallmyer - Regional Account Manager
513-460-5381
bkallmyer@revolutionmw.net

www.dm2america.com
www.dm2.it



REVOLUTION
MACHINE WORKS